

The Cowboy Carrier for '66 and '73 rifles (and '60 Henry) Allows '60, '66 and '73 clones chambered for .45 Colt to use Cowboy .45 Special cartridges (.44 Russian or .45 ACP, as well as proper length .45 Blank ammo in appropriately chambered rifles.)

**Installation Instructions for the
Cowboy .45 Special Carrier**

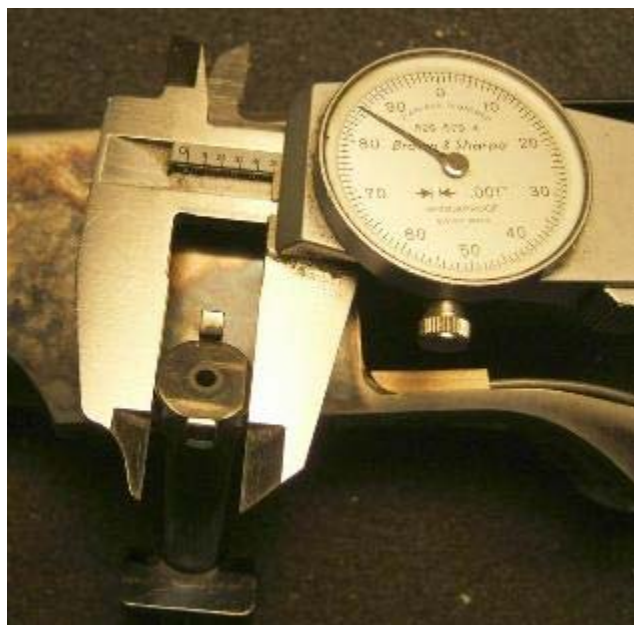
Remove the existing carrier from your rifle and replace it with your new Cowboy .45 Special Carrier.

Remove the Bolt from the rifle and hold it in a padded vise with the left front of the Bolt up.



Carefully file a flat on the front left side of the Bolt. Finish with a small lead in.

The amount removed needs to be only about .020”.





Reassemble the rifle.

Load the Cowboy .45 Special rounds normally.

For a '73 or '66 be sure to push the last round in about 1/2" deeper than normal. Use a soft tip "pusher rod" like a pencil, eraser leading. A Deer Antler tine makes a good period correct pusher.

Operate and fire the gun normally.

**If you have any questions e-Mail Happy Trails at
The Smith Shop
69 Lillian Court
Warwick, RI 02886
401-864-2348
www.thesmithshop.com
HappyTrails@thesmithshop.com**